



The importance of examining silent research impacts arising from government decision making



Dr Jimmy Twin^{1,2}

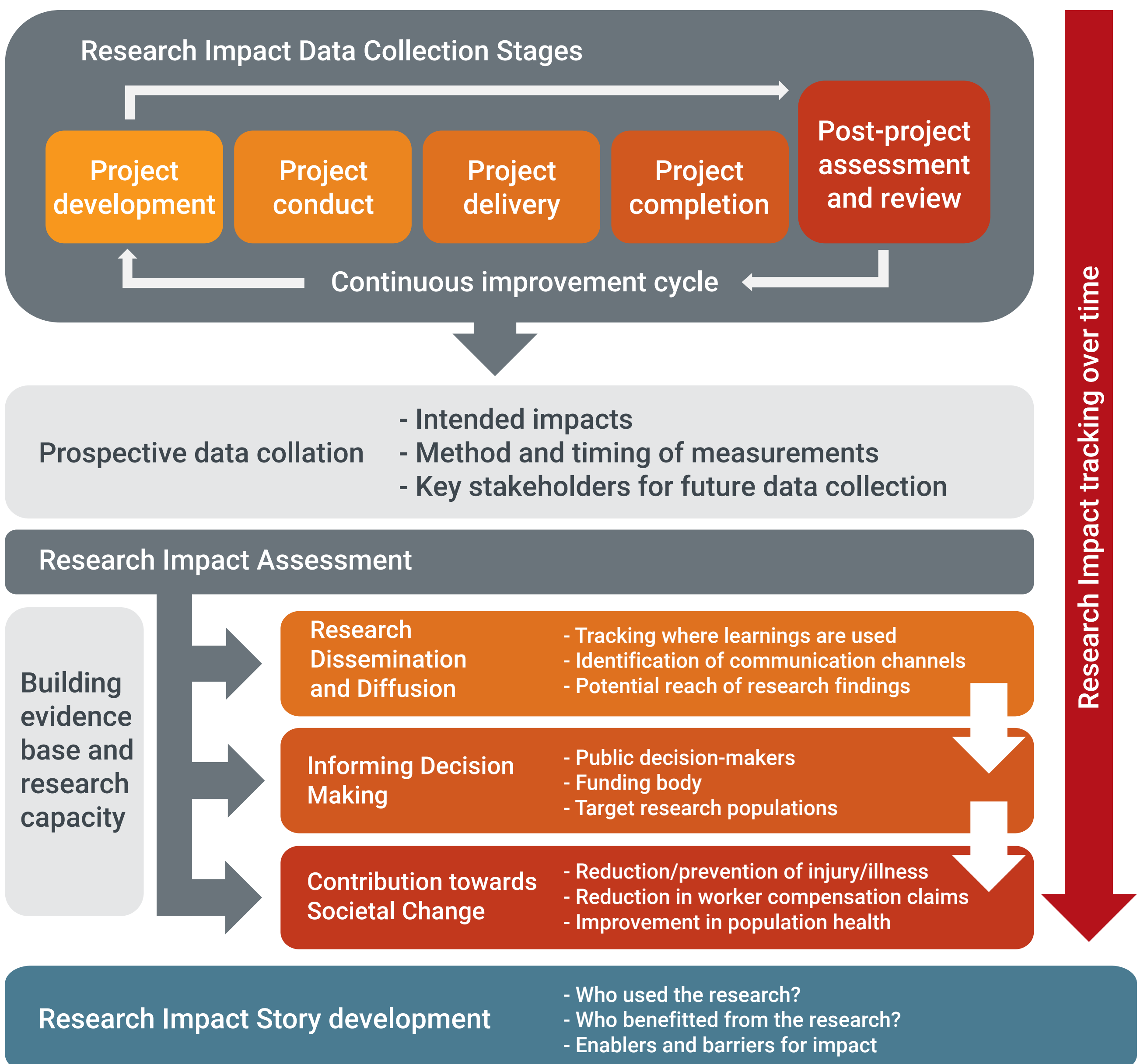
¹ Institute for Safety, Compensation and Recovery Research (ISCRR), Monash University

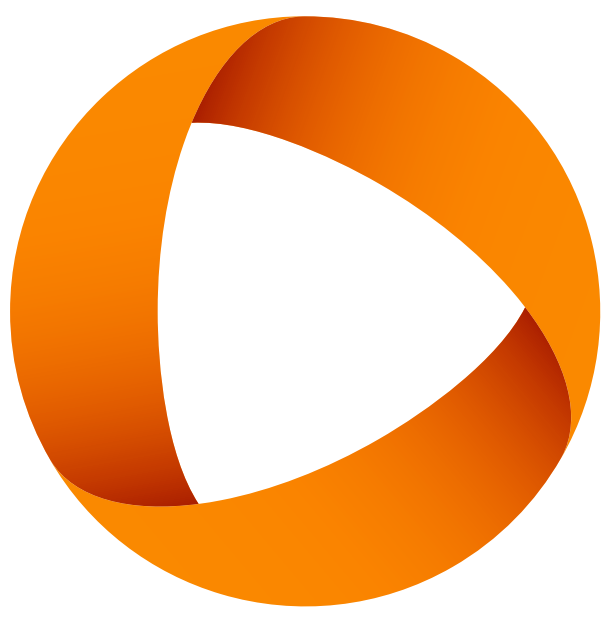
² School of Public Health and Preventive Medicine, Monash University

INTRODUCTION

In collaboration with WorkSafe Victoria, the Institute for Safety, Compensation and Recovery Research (ISCRR) adopted a research impact monitoring and measurement framework, which included the development of research impact stories which highlight success factors and barriers to impact realisation.

ISCRR Research Impact Framework





The importance of examining silent research impacts arising from government decision making



ISCRR research impacts

35 ISCRR projects were assessed for research impact

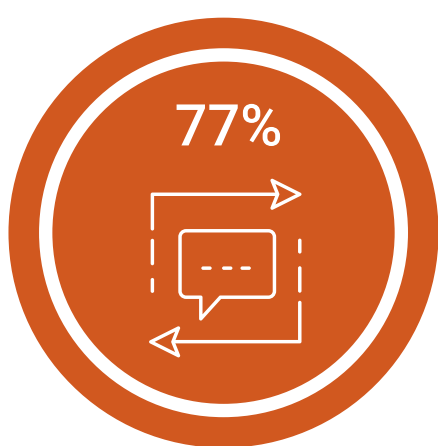
Included were projects completed during 2019 to 2022	Research impact level			Research type totals
	Research Dissemination and Diffusion	Informing Decision Making	Contribution towards Societal Change	
Prevention portfolio	16 (100%)	13 (81%)	-	16
Identifying and measuring workplace risks	11 (100%)	10 (91%)	-	11
Preventing workplace injury and illness	3 (100%)	3 (100%)	-	3
Promoting healthy working environments	2 (100%)	-	-	2
Recovery portfolio	19 (100%)	14 (74%)	2 (11%)	19
Treatment	10 (100%)	9 (90%)	-	10
Claims management	6 (100%)	4 (67%)	2 (33%)	6
Return to work	3 (100%)	1 (33%)	-	3
Research impact totals	35 (100%)	27 (77%)	2 (6%)	35



Research Dissemination and Diffusion

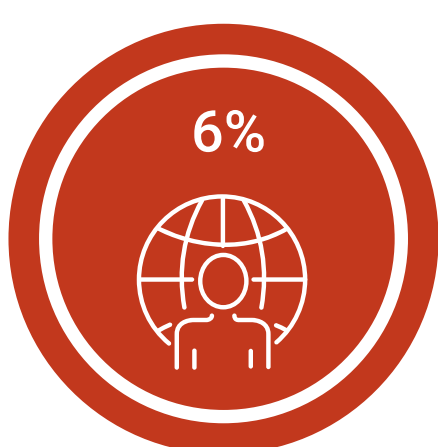
All ISCRR research findings are disseminated via a report and presentation to key stakeholders. Evidence relating to the extent of research diffusion was largely based on how involved ISCRR was with the project, and whether champions were identified who could provide such information (data not shown).

NB. All research included in this analysis was requested by WorkSafe Victoria and it is expected for all research to be disseminated to appropriate stakeholders.



Informing Decision Making

The majority of ISCRR projects informed decision making which ranged from informing internal strategies, treatment options and guidelines, and further research, as well as leading to the development of programs and initiatives. For the research projects without measured decision-making impacts (n=8), these were either too early in their impact journey, or there were difficulties in obtaining research impact metrics.



Contribution towards Societal Change

Two research projects demonstrated a connection to preliminary societal level impacts improving the outcome of injured workers receiving compensation entitlements. Both of these projects were pilot program evaluations where ISCRR researchers were actively involved in implementation discussions and was seen as improving the pilots during their trial.

Exclusion criteria

- Non-ISCRR researcher led projects
- Development of program logics
- Student projects (e.g. Honours)
- Projects less than a week in duration



The importance of examining silent research impacts arising from government decision making



Silent research impacts

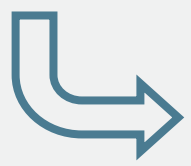
Analysis of the research projects that led to decision-making impacts revealed:

56% (n=16) informed **current or future strategies**



These decision-making impacts tend to be internal and/or confidential

26% (n=7) informed **treatment guidelines**



Supported current treatment options

14% (n=4) informed **program implementation**

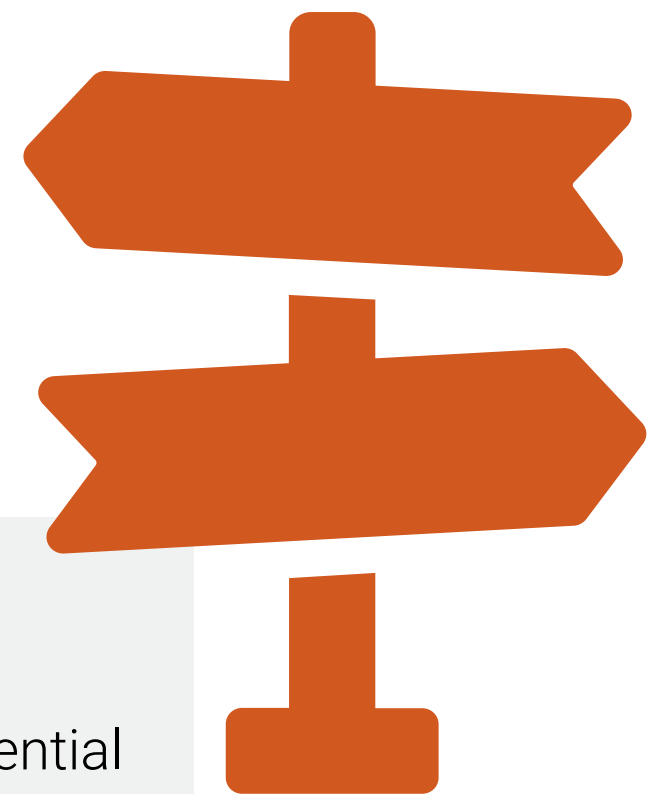


Evaluations that included confidential information

4% (n=1) informed **working group activities**



Confidential information regarding internal processes



The majority of ISCRRR research carried out for WorkSafe Victoria resulted in **silent research impacts**. These types of impacts may be difficult to measure and monitor without a close relationship with the research users.

Research impact success factors

- Prospective impact measurement
- Feasible impact goals
- Researcher engagement throughout project life cycle
- Champions driving agenda
- Resource commitment to address research problem
- Engagement with industry leaders

Why is it important to measure and monitor these types of impacts?

Measuring research communication success

Research impact measurement creates a greater understanding of research user needs and **how effective research communication strategies have been.**

Guiding future translation activities

Understanding where and how impacts were achieved **allows the development of tailored translation activities** to serve as a catalyst for impact goals.

Value of research investment

Impact data serves as a measure of research investment success with ongoing data collection able to **connect research learnings to longer-term societal impacts.**

For more information on this work contact info@iscrr.com.au

